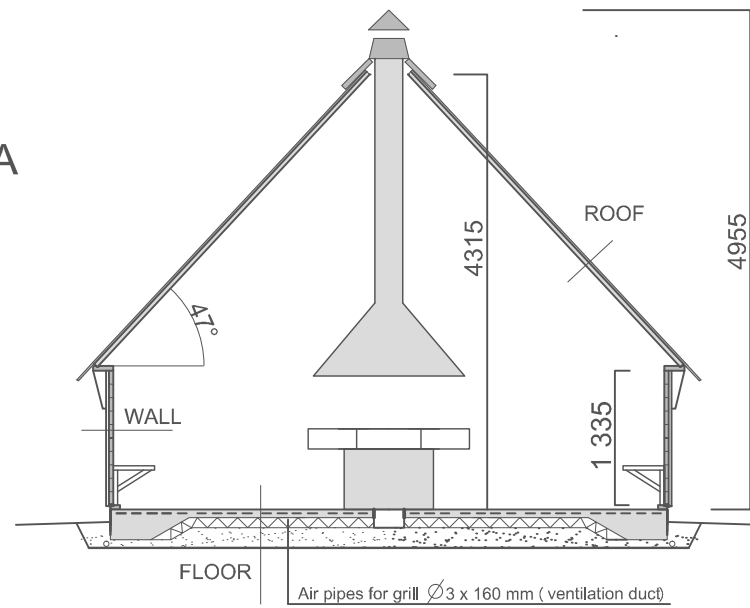
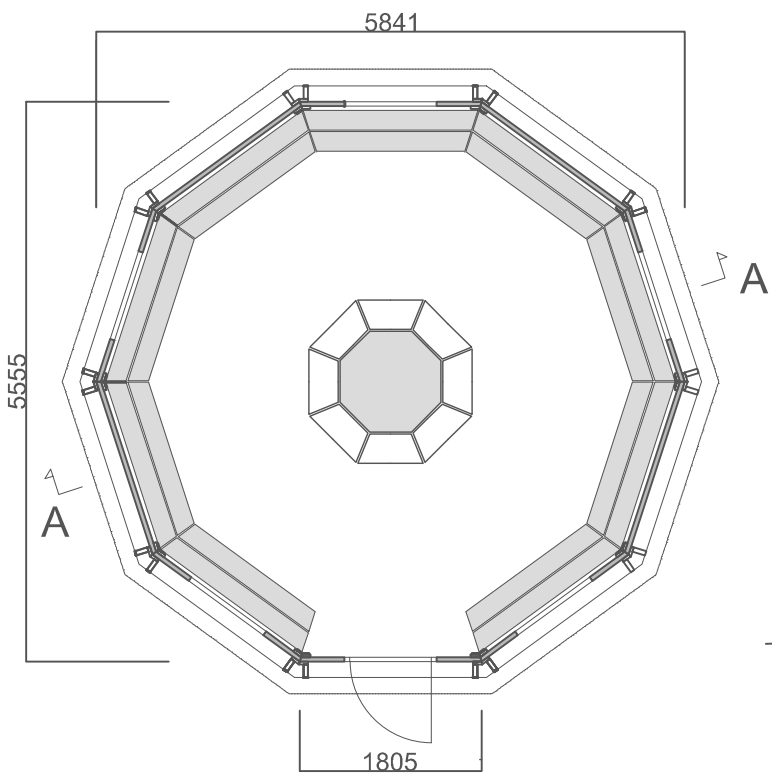
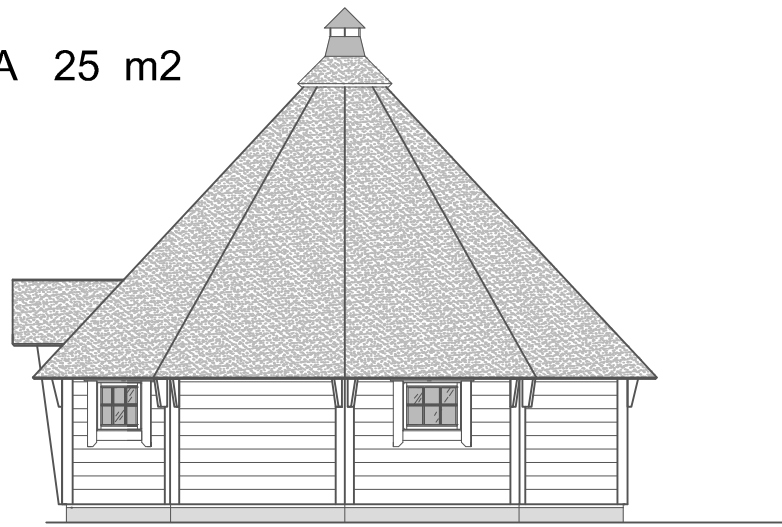
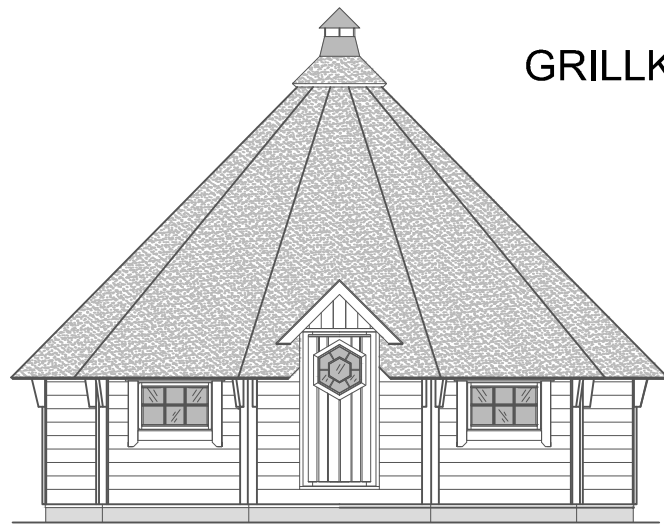


GRILLKOTA 25 m<sup>2</sup>



**ROOF**

Roofing felt  
Panel 18 x 145  
Frame 45 x 45

**WALL**

Timber panel 45 x 145

**FLOOR**

Concrete slab 80 mm  
Steel mesh embedded in concrete slab  
( B500K 4-150)  
Cellular plastic / styrofoam 100 mm  
Compacted gravel 200 mm ( 0-16 mm )  
Base frame 45 x 95 pressure  
impregnated  
( Bitumen felt under base frame )

GRILLKOTA 25 m <sup>2</sup>	Drawings 1:75
ARCTIC FINLAND HOUSE Kaartotie 2, 33950 PIRKKALA P. 010 420 1230	Christian Anttila, RKM